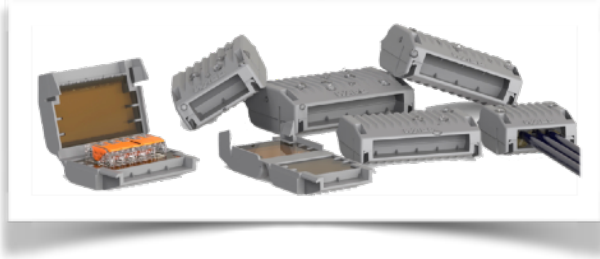


## WAGO GELBOX



The Wago Gelbox for Splicing connectors, ideal solution to make these connections watertight (IPX8).

### Benefits

#### Easy Installation:

- Space-saving, compact design

- Gain even more junction box space because several connectors can be used in one Gelbox

- Easy to use through innovative design

- Readily extend circuits, thanks to fast re-accessibility

#### Fast Installation

- Time-saving thanks to direct commissioning, no mixing and hardening of gel mass is necessary.

- Always ready to use thanks to gel-filled boxes that can be stored indefinitely.

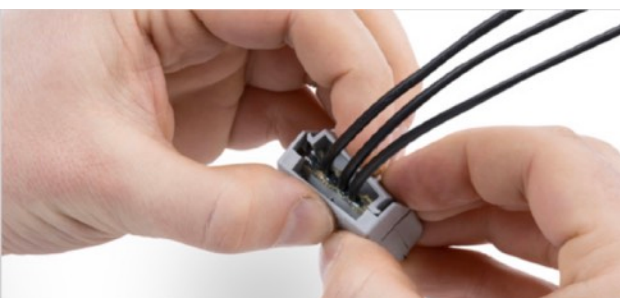
Open the Gelbox at side latches



Place the wired connector in the gelbox



Close the gelbox









Simply extend circuits: Open the gelbox, gel from the connector, open the connector and connect new components to the cable





## Available sizes

	Description	Articlenumber	EH
	Gelbox, IPX8, Series 221, 2273, max 4mm <sup>2</sup> -connectors, Size 1	42-333412	4
	Gelbox, IPX8, Series 221, 2273, max 4mm <sup>2</sup> -connectors, Size 2	42-333413	4
	Gelbox, IPX8, Series 221, 2273, max 4mm <sup>2</sup> -connectors, Size 3	42-333415	3
	Gelbox, IPX8, Series 221, max 6mm <sup>2</sup> -connectors, Size 4		4
	Gelbox, IPX8, Series 221, max 6mm <sup>2</sup> -connectors, Size 5		3
	Gelbox, IPX8, Series 221, max 6mm <sup>2</sup> -connectors, Size 6		2

## IPX8

IP = Ingress Protection;  
 The first digit after IP means protection against solid substances like dust.  
 The second digit means protection against fluids like water.

### IPX8

X = not tested against dust  
 8 = continuous immersion of 1m or more

First Digit		Second Digit	
Level	Protected agains	Level	Protection against
X	Not tested	X	Not tested
0	Not Protected	0	Not Protected
1	Objects larger then 50mm	1	Dripping water
2	Objects larger then 12,5mm	2	Dripping water tilted at 15°
3	Objects larger then 1,5mm	3	Spraying water
4	Objects larger then 1,0mm	4	Splashing water
5	Dust Protection	5	Water jets
6	Dust tight	6	Powerful water jets
		7	Immersion up to 1m
		8	Continuous immersion, 1M or more